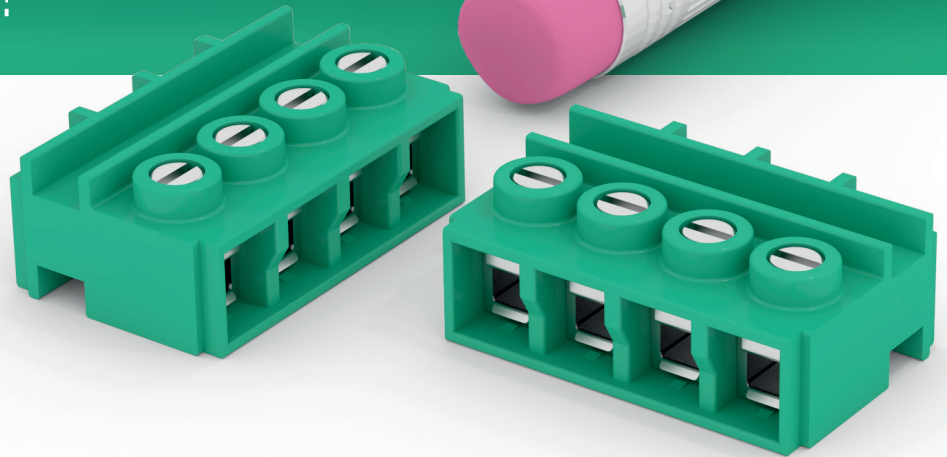


Connector CXF

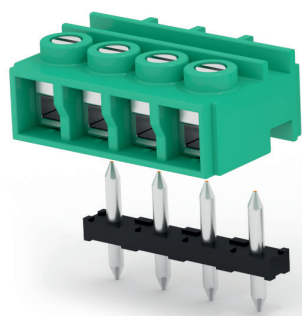
Small & Smart!

Height 7,9 mm/.311"
 Pitch 5 mm/.197"
 Voltage 300 V
 Wire section 1,5 mm²/16 AWG
 Power 12 A
 IP Rating IP00 (IP20 on request)

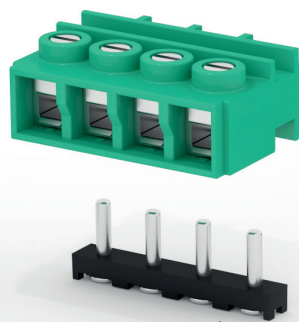


Compact, versatile and cutting edge screw female connection to STH[®] male

SAURO introduces into the market the female **CXF** series connector, the ideal solution if the space available is minimum or the design hosting the application aims at miniaturization. Furthermore, the corresponding male **CSMH** and **CSMD** connector implies a cost saving in the pcb assembly process thanks to **SAURO's STH[®]** technology. The innovation of a **by the law** screw connection of such small dimensions allows **SAURO** once again to offer its customers a successful and technologically advanced product.



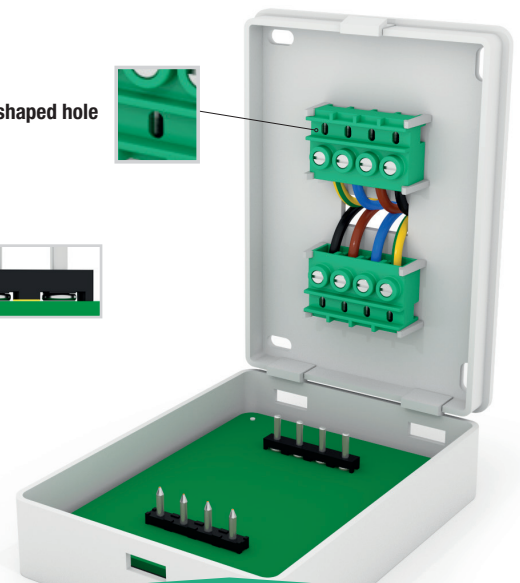
CSMH



CSMD



oval-shaped hole



Winning Combination

The male **CSMH** and **CSMD** connectors can be soldered onto the pcb via reflow soldering and are suitable for pick and place systems for tape on reel, tube or tray packaging (**SAURO STH[®]** - SMD Through Hole- Technology, similar to PiP-Pin in Paste or THR-Through Hole Reflow Technology).

Versatility

The geometry of the insulating housing enables a versatile mating to the shell it is aimed for. Furthermore, thanks to **SAURO's flexibility**, it is also possible to customize the product.

Also in these products we can find all the basic principles of SAURO's strategy:

- ✓ use of copper alloys
- ✓ compliance to European Directive EN 60335 for domestic appliances, to REACH and RoHS 2, using only pure tin (Sn100) and banning the use of lead and all substances detrimental to human health, the environment and industrialization.
- ✓ Whiskers free guarantee
- ✓ orientation towards the customer's needs: modern, valid, miniaturized, customized, safe and economical solutions
- ✓ completely automated production based on Industrie 4.0 and Lean-Smart Factory
- ✓ zero functional defect guarantee: every single pole has already worked on the assembly line



SAURO
 ELECTRONIC CONNECTORS
 — by the law —



ISO
9001:2015



ISO
14001:2015



BS OHSAS
18001:2007