



INVENTING A SMART FUTURE

SIMCom Company Profile

March, 2024

SIMCom Wireless Solutions Limited

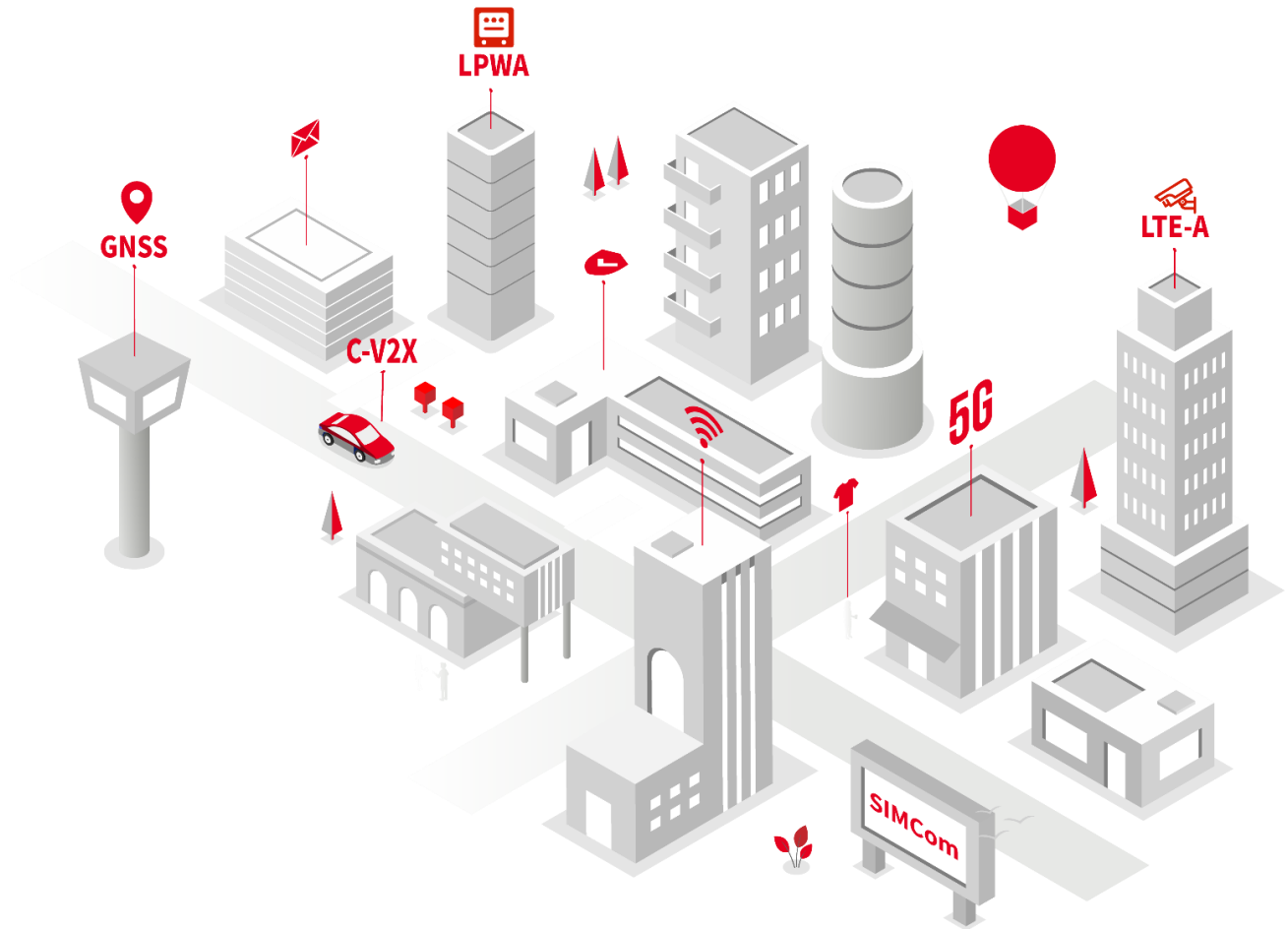
John Faucher

Tel.: +1 (858) 866-4111

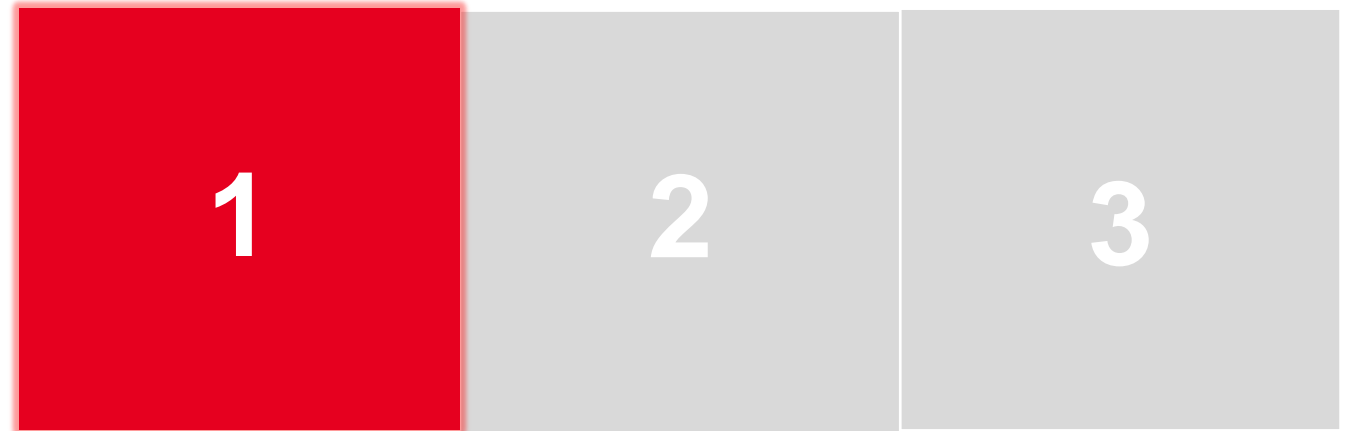
Email: johnf@simcom.com

Located in San Diego, CA.

Website: www.simcom.com



SIMCom Overview



Why choose SIMCom?



21⁺ years

Leading the wireless module industry

180⁺ countries

Worldwide sales network

10,000⁺

Collaborate customers all over the world

500⁺ million

Cumulative shipments

500⁺ million

Investment in 5G R&D and automatic equipment

5000⁺ m²

R&D laboratory

500⁺

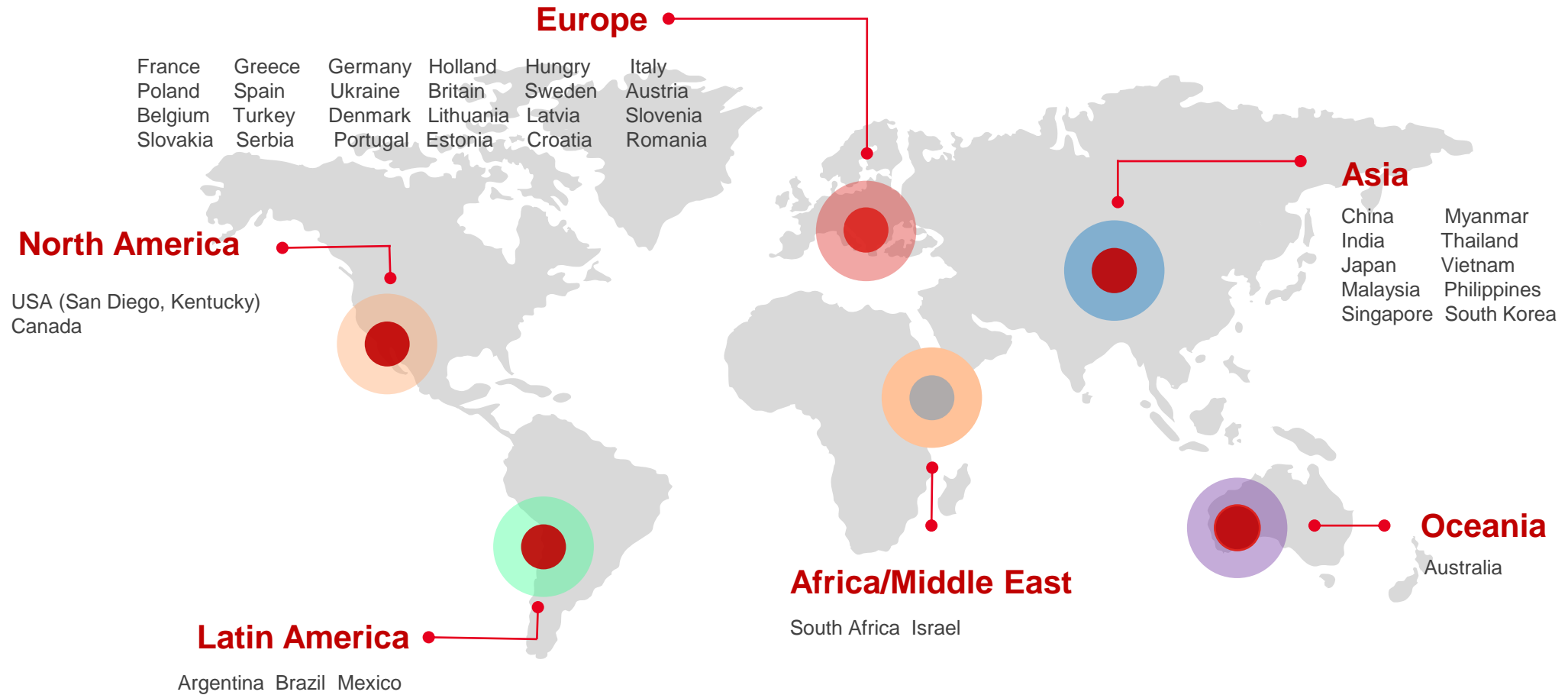
Global patents and certifications



Global Sales/Support Network



30+ sales offices serve **180+** countries and regions in five continents.



Key Partners and Ecosystem



Helping customers to develop global markets.
Rich certifications save customer large amount of time and investment.

Main Component Vendors



Global Certifications



Global Carriers



Software Solutions



Cloud Platform & Services



Supply Chain Management



Multiple qualified factories and automatic production lines

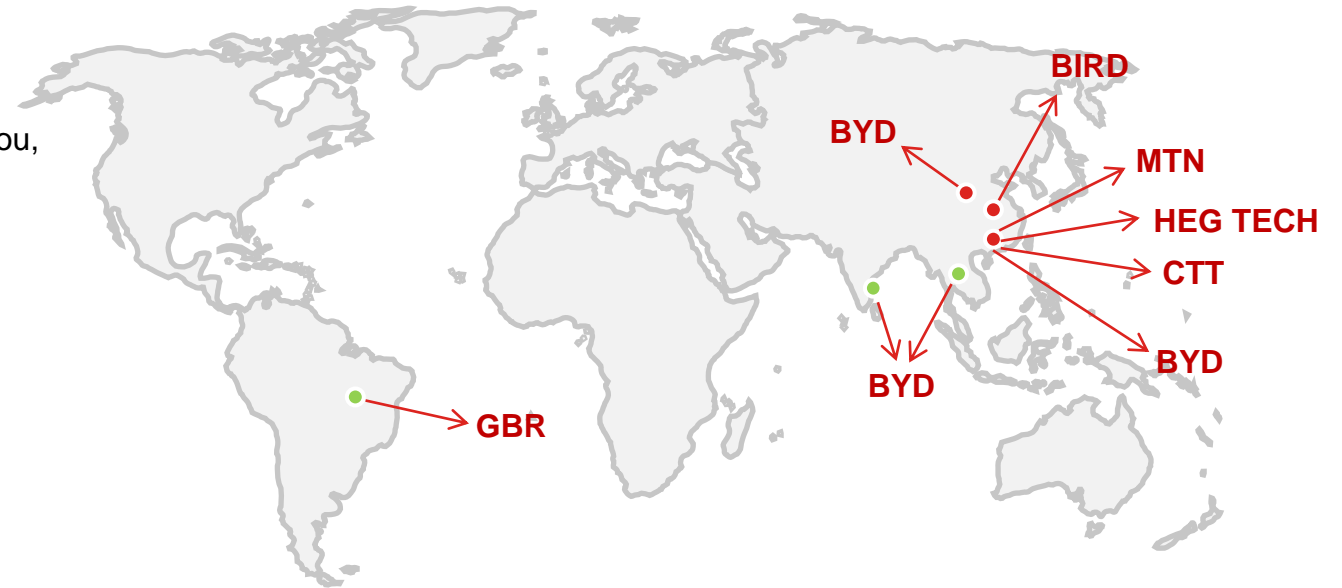
- Qualified factories includes BYD@Shenzhen, BYD@ Xi' an, BIRD@Suizhou, CTT@Huizhou, HEG TECH@Huizhou, MTN@Huizhou, BYD@ Vietnam, BYD@ India, GBR@Brazil
- Innovative Auto lines dramatically shrink back-end cycle times

Business Continuity Management process

- Monitor potential losses ,develop risk-mitigation process
- Continuous review of internal/external partners & suppliers

First-class quality

- Strict quality control system for high-quality products



Multiple manufacturing partners assure delivery and lead-time

Production Capacity

- Advanced SMT Machine
- Daily production capacity >200K
- Standard leadtime: 8-12weeks

Qualified Production System

- ISO9001
- ISO14001
- ISO27001
- ISO45001
- OHSAS18001
- IATF 16949 : 2016
- QC0800000
- TL9000
- ESD2020

SIMCom manufacturing strategy assures on-time delivery

Product Portfolio



SIMCom Product Portfolios in the 5G Era



Positioning

- | Single Frequency & Multi-mode
- | Multi-Frequency
- | RTK



Low & Middle Data Rate

- | 2G/3G
- | LPWA
- | LTE-M
- | NB-IoT
- | Cat.1/Cat.1 bis



MBB

- | LTE Cat.4
- | LTE-A Cat.6
- | LTE-A Pro Cat.12
- | 5G



Automotive

- | Automotive Grade
- | Cat.4
- | V2X
- | 5G/5G+V2X



Edge Computing

- | Smart Module
- Low
- Mid
- High

Complete Range of Cellular & GNSS Product Lines

5G Module Roadmap

SDX62

SDX65

SDX72/75

SDX35

Sub 6GHz+mmW



- SIM8380G-M2**
- M.2
 - 30*52*2.3mm
 - Global
 - 4+2 Antenna



- SIM8390X**
- LGA
 - 46*53 mm
 - Rel.17

Q1.24

Sub 6GHz
(41.0*43.6mm, LGA)



- SIM8260X**
- LGA
 - 41*43.6mm
 - Rel.16
 - -A/-C/-E



- SIM8270X**
- LGA
 - 46*53 mm
 - Rel.17

Q4.23



- SIM8230X**
- LCC+LGA
 - 30*30 mm
 - RedCap

Q4.23

Sub 6GHz

Sub 6GHz
(30.0*52.0mm, M.2)



- SIM8260G-M2**
- M.2
 - Rel-16
 - Global

Sub 6GHz
(30.0*42.0mm, M.2)



- SIM8262X-M2**
- M.2
 - Rel.16
 - -A/-E



- SIM8230X-M2**
- M.2
 - 30*42 mm
 - RedCap

Q1.24

2021

2022

2023

2024

LTE-A Module Roadmap

2021~2023

Cat.12

SIM7912X



- LTE Cat 12
- 600M DL/150M UL
- LGA Form Factor
- -E/-A

SIM7912X-M2 R2



- LTE Cat 12
- 600M DL/150M UL
- M.2 Interface
- -E/-A/-G

Cat.6

SIM7906X



- LTE Cat 6
- 300M DL/50M UL
- LGA Form Factor
- -E/-A

SIM7906X-M2 R2



- LTE Cat 6
- 300M DL/50M UL
- M.2 Interface
- -E/-A/-G

Note: Special variants for CBRS/LAA/4x4 MIMO

SDX12

LTE Module Roadmap



30x30 Family

24x27 Family

24x24 Family

Other Series

Cat.4

SIM7600X-H Series



30x30mm
-E/-NA/-JC/-SA/-G

SIM7500X-H Series

24x27mm
-A/-V/-AD/-E/-JC/-
JE/NA*



mPCIe card available

- SIM7500X Series
- SIM7600X Series
- SIM7600X-H Series



M.2 card available

- SIM7600X-H Series

Cat.1



SIM7600X Series

30x30mm
-E/-SA/-NA/-G

SIM7500X Series

24x27mm
-A/-V/-AD/-E/-JC/-
JE/NA*



SIM7672X

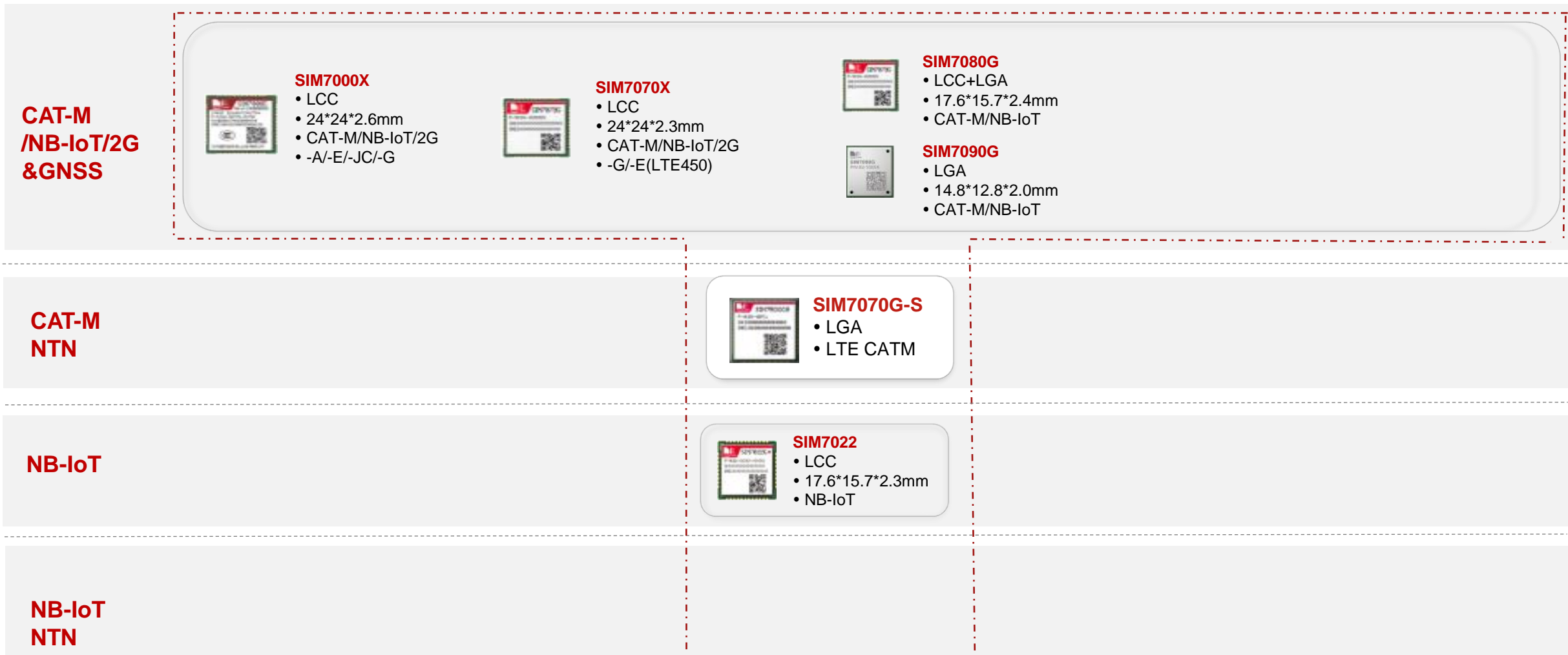


24x24mm
-E/-NA/-G

Small size Package

24x24mm Family Compatible Design
30x30mm Family Compatible Design

LPWA Module Roadmap



2021~2023

Automotive Module Roadmap



Smart Module Roadmap - With Cellular

High



SIM8970X

- 44.1*45.6*2.8mm
- LCC+LGA Package
- LTE Cat.6,300M DL/50M UL
- CPU **QCM6125**, Octa ARM V-8 cores up to 2.0GHz
- 2520*1080 Dual display
- Camera 25MP
- Wi-Fi/BT/GNSS integrated
- **Android 10/11 /13**
- EU/SA/NA

Med



SIM8918X

- 40.5x40.5x2.8mm
- LCC+LGA Package
- LTE Cat.4,150M DL/50M UL
- CPU **QCM2290** 4xA53 2.0GHz
- 1680*720 HD+ Display
- Camera 13MP
- Wi-Fi/BT/GNSS integrated
- **Android 11/12/13/Linux**
- CE/EA/SA/NA/JP

Entry

Coming Soon

Before

2022

Smart Module Roadmap - Without Cellular

High



SIM8070

- 44.1*45.6*2.8mm
- LCC+LGA Package
- CPU QCM6125 ,Octa
- ARM V-8 cores up to 2.0GHz
- 2520*1080 Dual display
- Camera 25MP
- WIFI/BT

Med



SIM8050LH

- LCC+LGA 44.1*45.6*2.8mm
- SDM450
- Octa-Core 1.8GHz
- Dual Display、Dual Cameras
- WIFI/BT



SIM8918W

- LCC+LGA 40.5*40.5*2.8mm
- QCM2290
- Quad-Core 2.0GHz
- 1 Display、3 Cameras
- WIFI/BT

Entry



SIM8905E-W

- LCC+LGA 40.5*40.5*2.8mm
- MSM8909
- Quad-Core 1.1GHz
- 1 Display、Dual Cameras
- WIFI/BT

Before

2022






GNSS Module Roadmap



Multi Frequency

 <p>SIM68D</p> <ul style="list-style-type: none"> • 16*12.20*2.4mm • LNA/SAW Inside • Beidou/GPS/GLONASS/Galileo/QZSS • L1+L5 	 <p>SIM68MD</p> <ul style="list-style-type: none"> • 10.1*9.7*2.5mm • SAW Inside • Beidou/GPS/GLONASS/Galileo/QZSS • L1+L5 	 <p>SIM66MD</p> <ul style="list-style-type: none"> • 10.1*9.7*2.5mm • LNA/SAW Inside • Beidou/GPS/GLONASS/Galileo/QZSS • L1+L5: RTK* 	 <p>SIM68AT</p> <ul style="list-style-type: none"> • 16*12.20*2.4mm • LNA/SAW Inside • Beidou/GPS/GLONASS/Galileo/QZSS • L1+L5: RTK 	 <p>SIM68AD</p> <ul style="list-style-type: none"> • 16*12.20*2.4mm • LNA/SAW Inside • Beidou/GPS/GLONASS/Galileo/QZSS • L1+L5: DR 	<div style="background-color: yellow; border: 1px solid black; padding: 2px; display: inline-block;">Q1.24</div>  <p>SIM66D</p> <ul style="list-style-type: none"> • 16*12.20*2.4mm • LNA/SAW Inside • Beidou/GPS/GLONASS/Galileo/QZSS • L1+L5: RTK
---	--	--	---	--	---

Multi Mode Single Band

 <p>SIM68M</p> <ul style="list-style-type: none"> • 10.1* 9.7* 2.5mm • LNA/SAW Inside • Beidou/GLONASS 	 <p>SIM33 Series (Embedded Antenna) SIM33ELA/SIM33EAU</p>	 <p>SIM66M</p> <ul style="list-style-type: none"> • 10.1* 9.7* 2.5mm • LNA/SAW Inside • GPS/GLONASS 	 <p>SIM65M</p> <ul style="list-style-type: none"> • 10.1* 9.7* 2.5mm • LNA/SAW Inside • Beidou/GPS/GLONASS/Galileo/QZSS 	 <p>SIM32ELA (Embedded antenna)</p> <ul style="list-style-type: none"> • 14* 9.6* 2.15mm • LNA/SAW Inside • Beidou/GPS/GLONASS/Galileo/QZSS
--	--	---	---	---

WIFI Module Roadmap

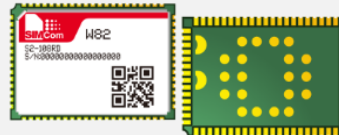


For LTE



W58
16.6x13mm
Base on QCA-9377-3
Wi-Fi with SIM7600X-H
IEEE 802.11b/g/n

For 5G



W82
17x24mm
Base on WCN6856
WIFI 6 with SIM8260 series
IEEE 802.11a/b/g/n/ac/ax
Support 2x2+2x2 MU-MIMO

2021

2022

IoT Applications



Typical Applications



Industry

- Industrial PDAs/ Scanners
- Industrial PCs
- Rugged Tablet PCs
- Pipeline Monitors
- Robots
- Flowmeters
- UAVs
- Industrial Refrigerators
- Indoor Air Monitozzzrs
- Water Valves/ Pump Controls



Life & Healthcare

- Personal Trackers
- Pet Trackers
- Wearables
- Home Automation
- Elderly Monitoring
- Remote Medical Equipment
- Glucometers
- Blood Pressure Monitors
- Recreational Machines
- Patient Monitoring Laptops



Agriculture & Environment

- Trail Cameras
- Food Traceability
- Farmland Monitoring
- Farm Machinery Management
- Meteorological Stations
- Wildlife Tracking
- Irrigation
- Environmental Monitoring

Typical Applications



Telematics & Transport

- Automotive OEMs
- Vehicle Tracking
- Asset Tracking
- Ship Tracking
- Special Purpose Vehicles
- Fleet Management
- OBD
- Vehicle DVRs
- Usage-Based Insurance



Energy

- Electricity Meters
- Gas Meters
- Water Meters
- Heat Meters
- Smart Grid
- Wind Turbines
- Solar Panels
- Charging Piles
- OBD
- Vehicle DVRs
- Usage-Based Insurance



Payment

- Wireless POS
- Cash Registers
- ATMs
- Vending Machines
- Top-up Machines

Typical Applications



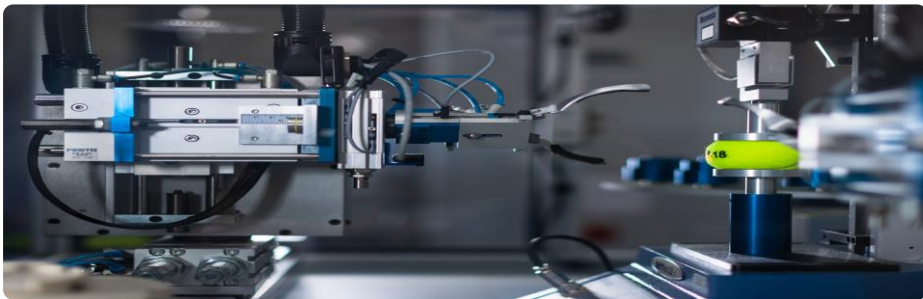
Safety

- Alarms
- Gas Detectors
- Intrusion Detection
- Motion Sensors
- Smoke Detectors
- Asset Protection



Smart Cities

- Street Lighting
- Smart Parking
- Advertisement Displays
- Traffic Lights
- Parking Meters
- Smart Bins
- Sharing Economy
- Toll Collection Systems
- Outdoor LED Lighting
- Smart Elevators
- Digital Signage



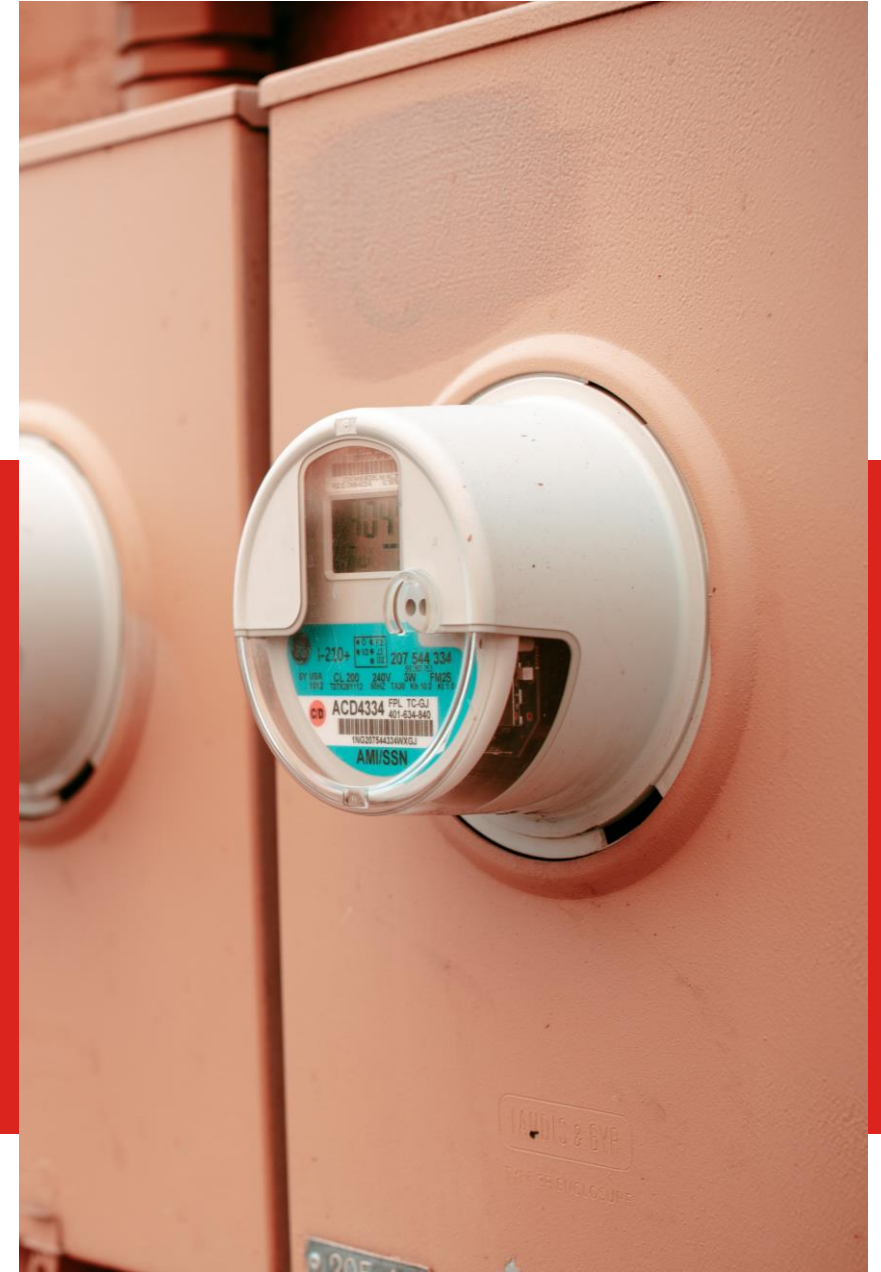
Gateways

- DTUs
- VOIP
- Consumer Routers
- Servers
- Industrial Routers
- Wi-Fi Hotspots

Typical Application Smart meters

SIMCom and Partners have created a series of smart metering devices in an effort to make sure that Water/gas/electricity is better distributed and protected.

These Smart metering applications were equipped with SIMCom's LPWA modules, used to realize remote data transmission and control. It supports accurate measurement, remote data transmission and real-time monitoring. More than that, it has certain warning functions, and helps the control platform to enable smart management, improve the management efficiency, and save human and time cost to a very large extent.



Typical Application Smart Payment

Alipay Box Dragonfly F1 is a device terminal that combines Alipay Cloud's face recognition function and IoT technology. SIMCom smart modules have been used in this device for data transmission. Alipay Box Dragonfly F1 combines voice broadcast, password keypad, and advertising electronic poster, face recognition payment, scan code payment and other functions.

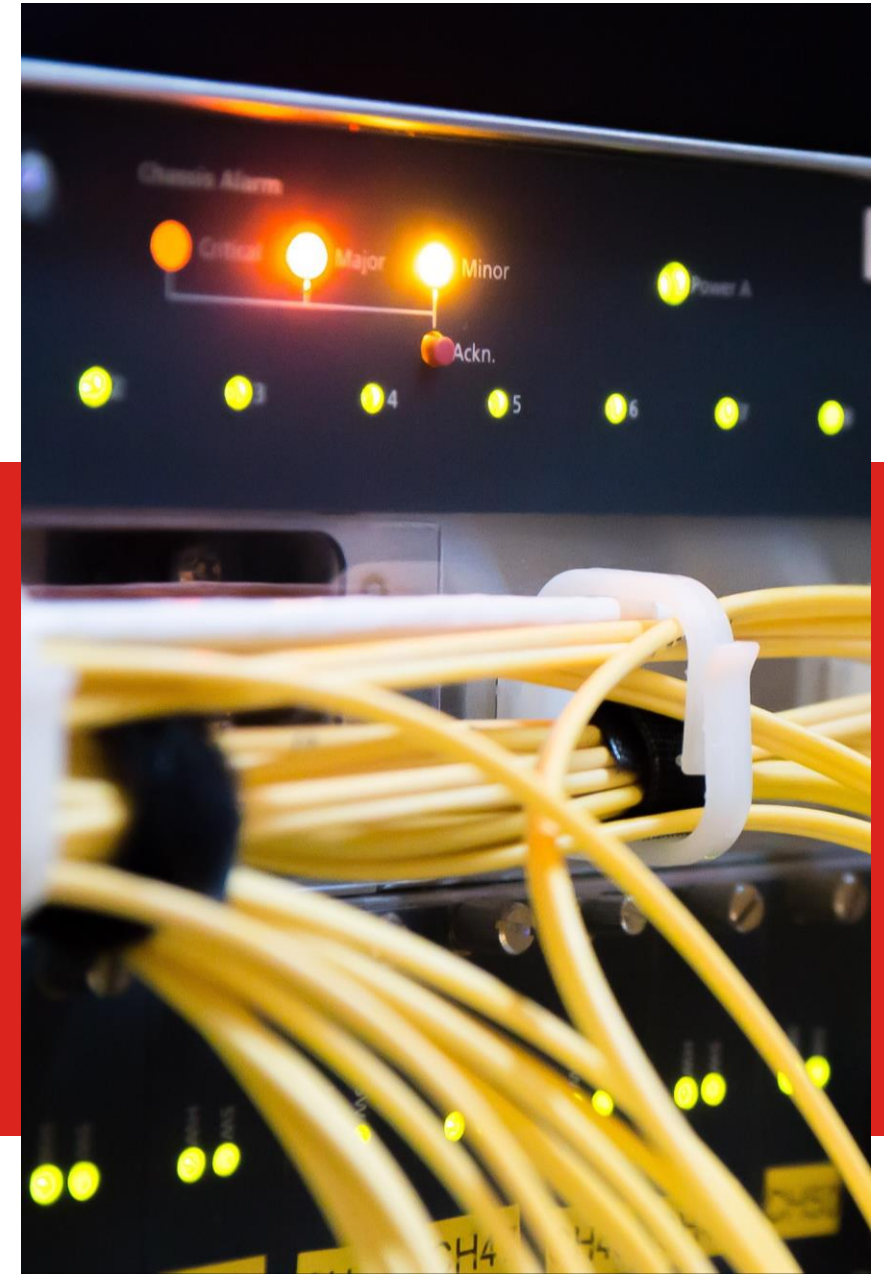
Compared with traditional payment methods, with the addition of biometrics and facial recognition, smart payment has enabled convenient self-service shopping, giving consumers a hands-free experience.



Typical Application Industry Router

Industry router is a fundamental device in the wireless communication. SIMCom 5G modules have been used in the 5G industry router, it can use public 4G/5G networks to provide users with long-range wireless big data transmission.

The 5G industrial router adopts high-performance industrial communication processors and industrial wireless modules and an embedded real-time OS is operating as its software support platform.



Typical Application

Fleet management

SIMCom LTE Cat.1 modules can provide proper transmission rates for data uploading and downloading, remote controlling, video surveillance, and voice calling. The capability of automatic fall-back to 2G/3G ensures the fleet continuous wireless connection on road. Moreover, the optimized RF design brings much more stability to the networking when the vehicles are running at high speed.

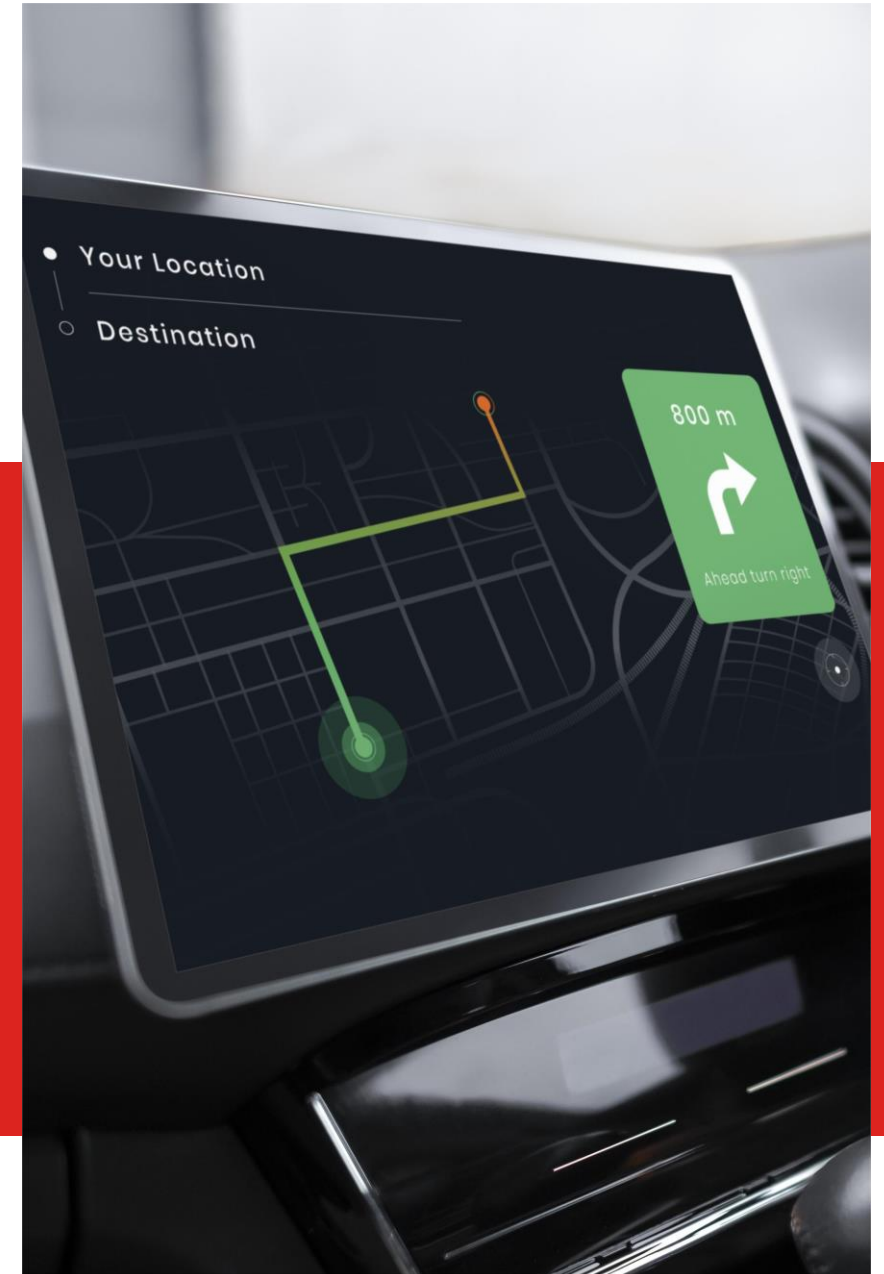
The GNSS positioning modules of SIMCom consist of the modules that support standard precision positioning working on a single frequency and dual frequency and the high-precision modules with capabilities such as RTK (Real Time Kinematics), and DR (Dead Reckoning).



Typical Application In-Vehicle Infotainment(IVI)

With the prosperous development of the automotive industry and the transport industry, in-vehicle infotainment system is expected to become a highlight of future vehicles, providing the most useful traffic information and entertainment service anywhere anytime, including navigation, video and audio streaming, and network connectivity.

SIMCom has collaborated with its partners to develop highly integrated and cost-effective in-vehicle infotainment, with support for WiFi hotspots, Bluetooth, navigation, music streaming and other features.





INVENTING A SMART FUTURE

Thanks!



SIMCom Wireless Solutions Limited

Address: SIMCom Headquarters Building, Building 3, No. 289 Linhong Road, Changning District, Shanghai P.R. China

Tel.: +1 (858) 866-4111

Email: johnf@simcom.com

Located in San Diego, CA.

Website: www.simcom.com

*SIMCom Wireless Solutions
- All rights reserved*

